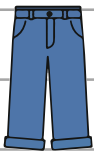
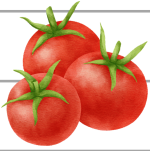


KONU: Kelime Bilgisi

Satır Sonuna Sığmayan Kelimeler



KONU: Kelime Bilgisi

Satır Sonuna Sığmayan Kelimeler

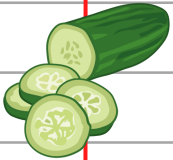
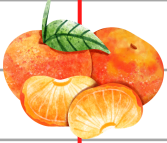
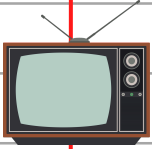
- Satır sonuna sığmayan kelimeler hecelerinden **kısa çizgi (-)** ile bölünür.



kap-
lumbağa

kaplum-
bağa

kaplumba-
ğa

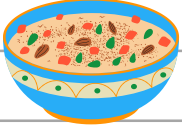




KONU: Kelime Bilgisi

Satır Sonuna Sığmayan Kelimeler

- Satır sonunda tek harf bırakılmaz.



şure a-

re aşu-

